

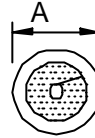
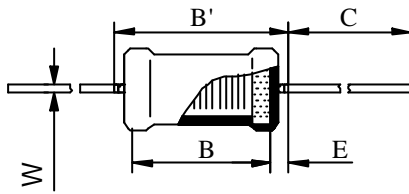
# SPECIFICATION FOR APPROVAL

REF :

PAGE: 1

PROD. NAME	POWER INDUCTOR	ABC'S DWG NO.	PA1226	S
		ABC'S ITEM NO.		

**. CONFIGURATION & DIMENSIONS :**



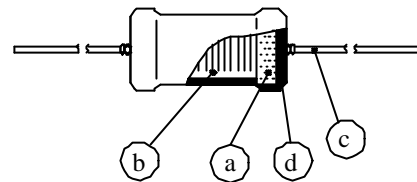
A	: 12.0 max.	m/m
B	: 20.0 ±0.0	m/m
B'	: 26.0 max.	m/m
C	: 25.0 ±5.0	m/m
E	: 3.0 max.	m/m
W	: 0.8 ± 0.05	m/m

**. SCHEMATIC DIAGRAM :**



**. MATERIALS :**

- a . Core : Ferrite DR core
- b . Wire : Enamelled copper wire
- c . Lead : Tinned copper wire
- d . Tube : Shrinkable tube 125 , 600V



**. GENERAL SPECIFICATION :**

- a . The inductance drop at rated current is 10% max.
- b . Temp. rise : 45 max. at rated current
- c . Storage temp. : -40 +105
- d . Operating temp. : -25 +85

**. ELECTRICAL CHARACTERISTICS :**

DWG No.	Inductance ( μ H )	Test Freq. (Hz)	RDC ( ) max.	IDC ( A ) max.
PA1226100KS	10 ±0%	1K	0.030	5.00
PA1226250KS	25 ±0%	1K	0.045	4.00
PA1226500KS	50 ±0%	1K	0.080	3.00
PA1226101KS	100 ±0%	1K	0.125	2.00
PA1226251KS	250 ±0%	1K	0.300	1.20
PA1226501KS	500 ±0%	1K	0.500	0.80
PA1226102KS	1000 ±0%	1K	1.200	0.60

1). : Packgaing Information  Bulk

ED-A12C

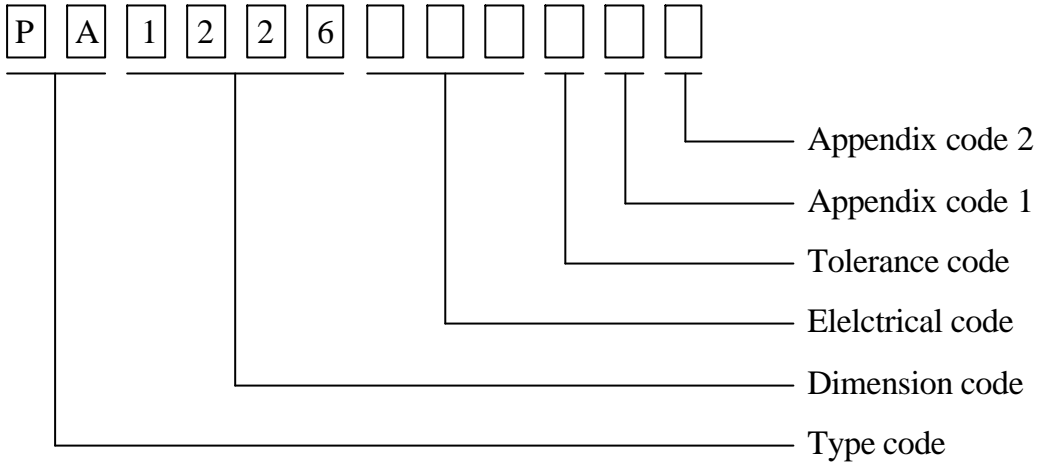
# SPECIFICATION FOR APPROVAL

REF :

PAGE: 2

PROD. NAME	POWER INDUCTOR	ABC'S DWG NO.	PA1226	S
		ABC'S ITEM NO.		

. DWG EXPRESSION :



Appendix code 1 : S : Standard products  
 A R , T Z : Special products

Appendix code 2 :

Code	Inner package	Inner package Q'TY	Remark
A	Box	50 pcs	