

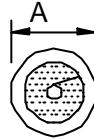
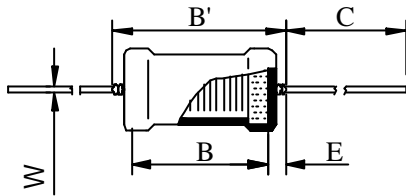
# SPECIFICATION FOR APPROVAL

REF :

PAGE: 1

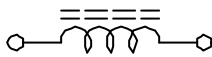
PROD. NAME	POWER INDUCTOR	ABC'S DWG NO.	PA1020	S
		ABC'S ITEM NO.		

· CONFIGURATION & DIMENSIONS :



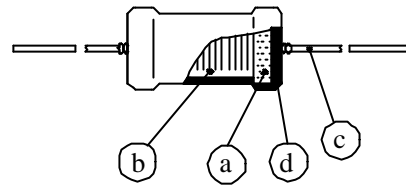
A	: 10.0 max.	m/m
B	: 15.0 ±1.0	m/m
B'	: 20.0 max.	m/m
C	: 25.0 ±5.0	m/m
E	: 3.0 max.	m/m
W	: 0.65 ±0.05	m/m

· SCHEMATIC DIAGRAM :



· MATERIALS :

- a · Core : Ferrite DR core
- b · Wire : Enamelled copper wre
- c · Lead : Tinned copper wire
- d · Tube : Shrinkable tube 125 , 600V



· GENERAL SPECIFICATION :

- a · The inductance drop at rated current is 10% max.
- b · Temp. rise : 45 max. at rated current
- c · Storage temp. : -40 +105
- d · Operating temp. : -25 +85

· ELECTRICAL CHARACTERISTICS :

DWG No.	Inductance ( μ H )	Test Freq. ( Hz )	RDC ( ) max.	IDC ( A ) max.
PA1020100KS	10 ±0%	1K	0.050	3.50
PA1020250KS	25 ±0%	1K	0.085	2.50
PA1020500KS	50 ±0%	1K	0.120	2.00
PA1020101KS	100 ±0%	1K	0.180	1.40
PA1020251KS	250 ±0%	1K	0.500	0.80
PA1020501KS	500 ±0%	1K	1.000	0.60
PA1020102KS	1000 ±0%	1K	2.200	0.40

1). : Packaging Information  Bulk

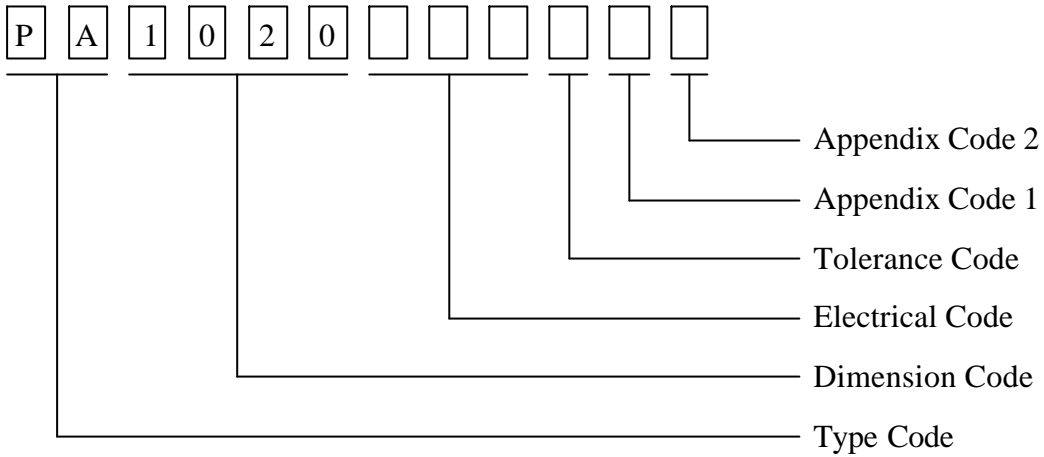
# SPECIFICATION FOR APPROVAL

REF :

PAGE: 2

PROD. NAME	POWER INDUCTOR	ABC'S DWG NO.	PA1020	S
		ABC'S ITEM NO.		

. DWG EXPRESSION :



Appendix Code 1 : S : Standard Products  
 A R , T Z : Special Products

Appendix Code 2 :

Code	Inner package	Inner package Q'TY	Remark
A	Box	90 pcs	