

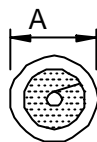
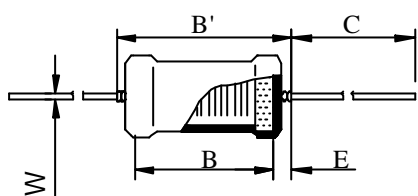
SPECIFICATION FOR APPROVAL

REF :

PAGE: 1

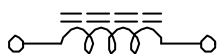
PROD. NAME	POWER INDUCTOR	ABC'S DWG NO.	PA0618	S
		ABC'S ITEM NO.		

· CONFIGURATION & DIMENSIONS :



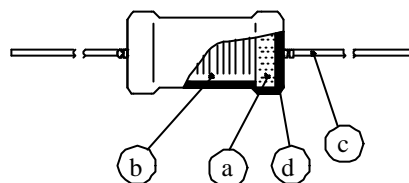
A	: 6.0 max.	m/m
B	: 13.0 ±0.1	m/m
B'	: 18.0 max.	m/m
C	: 25.0 ±0.1	m/m
E	: 3.0 max.	m/m
W	: 0.65 ±0.05	m/m

· SCHEMATIC DIAGRAM :



· MATERIALS :

- a · Core : Ferrite DR core
- b · Wire : Enamelled copper wire
- c · Lead : Tinned copper wire
- d · Tube : Shrinkable tube 125 , 600V



· GENERAL SPECIFICATION :

- a · The inductance drop at rated current is 10% max.
- b · Temp. rise : 45 max. at rated current.
- c · Storage temp. : -40 +105
- d · Operating temp. : -25 +85

· ELECTRICAL CHARACTERISTICS :

DWG No.	Inductance (μ H)	Test Freq. (Hz)	RDC () max.	IDC (A) max.
PA0618100KS	10 ±0%	1K	0.075	2.00
PA0618250KS	25 ±0%	1K	0.150	1.20
PA0618500KS	50 ±0%	1K	0.200	0.80
PA0618101KS	100 ±0%	1K	0.300	0.60
PA0618251KS	250 ±0%	1K	1.000	0.40
PA0618501KS	500 ±0%	1K	2.000	0.25
PA0618102KS	1000 ±0%	1K	3.000	0.20

1). : Packing Information Bulk

AE-001A

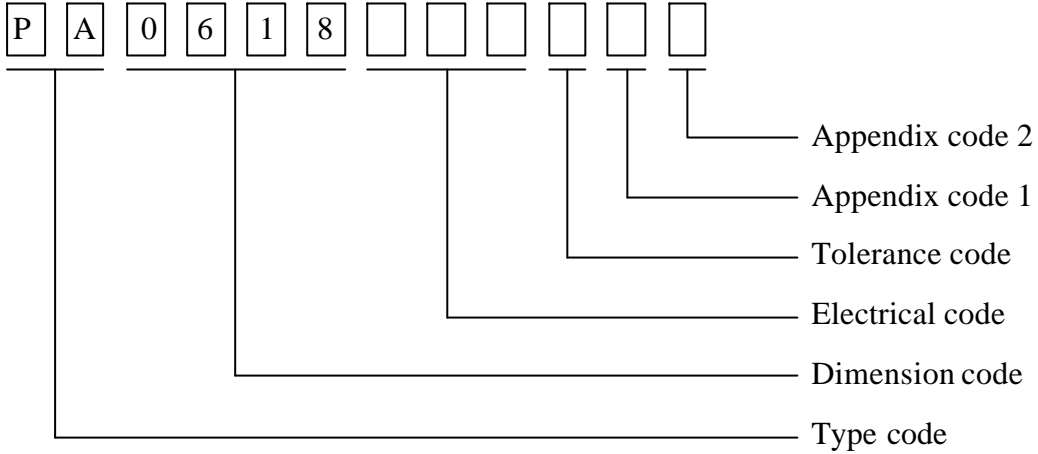
SPECIFICATION FOR APPROVAL

REF :

PAGE: 2

PROD. NAME	POWER INDUCTOR	ABC'S DWG NO.	PA0618	S
		ABC'S ITEM NO.		

. DWG EXPRESSION :



Appendix code 1 : S : Standard products
 A R , T Z : Special Products

Appendix code 2 :

Code	Inner package	Inner package Q'TY	Remark
A	Box	200 pcs	